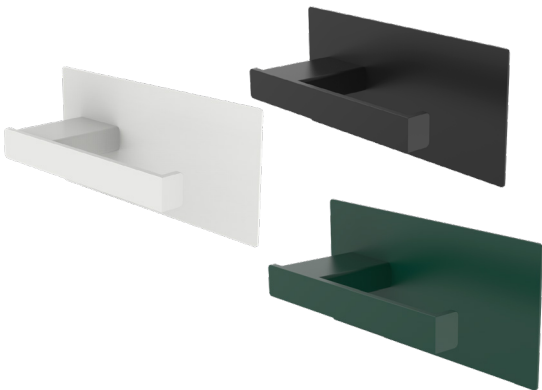




TOILET ROLL HOLDER

5010/5011/5012

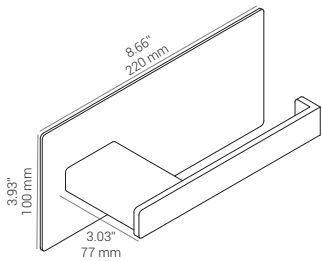
Wall mounted, right-oriented
1 standard roll
Ideal for low to medium traffic restrooms
Back-to-back mounting option



This sleek toilet roll holder combines elegance with simple functionality. Perfect for smaller restroom facilities with low usage frequency, where space optimization and aesthetic appeal are essential.

Technical data

	Metric	Imperial
Type	TOILET ROLL HOLDER Prod. No.: 5010, 5011, 5012 Toilet roll holder	TOILET ROLL HOLDER Prod. No.: 5010, 5011, 5012 Toilet roll holder
Dimensions	H: 100 mm x W: 220 mm x D: 77 mm	H: 3.93" x W: 8.66" x D: 3.03"
Material	Powder coated stainless steel	Powder coated stainless steel
Net weight	0,66 kg	1.45 lb
Tender text	Wall-mounted toilet roll holder. Powder coated stainless steel. Back-to-back mounting option. Netweight: 0,66 kg. H: 100 mm x W: 220 mm x D: 77 mm	Wall-mounted toilet roll holder. Powder coated stainless steel. Back-to-back mounting option. Netweight: 1.45 lb. H: 3.93" x W: 8.66" x D: 3.03"



Application

The elegant design is suitable for all types of public, commercial, and private homes. Combine it with the spare toilet roll holder in the same design and style.

References

Customer and staff restrooms, hotel rooms, cafés and small restaurants, clinics, and guest toilet.

Standard colour

Prod. No.: 5010, RAL 9005, Black, gloss 7-12.
Prod. No.: 5011, RAL 9003, White, gloss 75.
Prod. No.: 5012, RAL Classic.

Material

Wall bracket: Powder coated stainless steel.
Holder: Powder coated stainless steel.
Plastic insert: PETG.

Installation

Wall mounted. Back-to-back mounting option. The products can be mounted back-to-back on both sides of a wall.

